

Dashing Everywhere for Her



# Dashing Everywhere Style No. 651—Shown on page 4

These directions are for Men's small size (36-38) or Women's small size (32-34) depending on the size needles used. Changes are in parentheses for medium size (40-42) and large size (44-46) for Men or medium size (36-38) and large size (40-42) for Women.

## MATERIALS

**SPINNERIN** Marvel Twist or Nylaine Germantown Knitting Worsted (4 oz. skeins), 4 skeins Color A; 3 skeins Color B and 2 skeins Color C

**OR SPINNERIN** Orlon Sayelle Express (2 oz. skeins), 7 skeins Color A; 4 skeins Color B and 3 skeins Color C

**OR SPINNERIN** Alpine (50 gram balls) 9 balls Color A; 4 balls Color B and 3 balls Color C

**For Men's Sizes:** 1 pair each knitting needles Nos. 7 and 9

**For Women's Sizes:** 1 pair each knitting needles Nos. 6 and 8

## GAUGE For Men's Sizes:

9 sts = 2 inches      11 rows = 2 inches

## For Women's Sizes:

5 sts = 1 inch      6 rows = 1 inch

**NOTE 1:** Correct stitch and row gauges are most important in copying these European sweaters. If necessary, change to larger or smaller needles to maintain stitch and row gauges. Be sure to check your gauges carefully. Please note, in Europe the placement of each motif is left to the

knitter and she varies her gauge to create the effect she desires. We have placed motifs to simplify the chart directions according to the American gauge and have tried to help you maintain the effect of the finished sweater . . . Have fun by placing motifs as you wish. Be a Continental Designer! Read Important on Page 2.

**NOTE 2:** When changing colors, always pass yarn to be used, under yarn just used, to prevent a hole. Be careful not to pull yarn on wrong side too tightly and cause work to pucker. If desired, weave colors not in use in back of every 4th st.

## BODY MEASUREMENT

Chest 37(41-45) inches

At bustline 33(37-41) inches

## SWEATER MEASUREMENT

Chest 39(43-47) inches

At bustline 35(39-43) inches

**BACK:** With No. 7 needles for Men's sizes or No. 6 needles for Women's sizes and using Color A, cast on 87(97-107) sts. Rib in K 1, P 1 for 1½ inches. Change to No. 9 needles for Men's sizes or No. 8 needles for Women's sizes. Work in stockinette st (K 1 row, P 1 row) following Chart on page 12 (according to number of sts designated) until 140(142-144) rows of pat have been completed. Piece should measure about 27(27½-28) inches for Men's sizes or about 24½(25-25½) inches for Women's sizes.

**SHOULDERS:** Bind off 20(24-28) sts at beg of next 2 rows. There are 47(49-51) sts on needle.

**NECKBAND:** With A rib in K 1, P 1 for 1 row. Continue in ribbing, dec 1 st each side every other row until band measures 1¼ inches. Continue in ribbing, inc 1 st each side every other row for 1¼ inches. Bind off loosely in ribbing.

**FRONT:** Work same as Back.

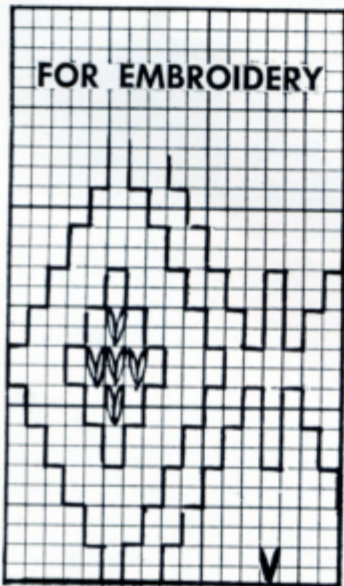
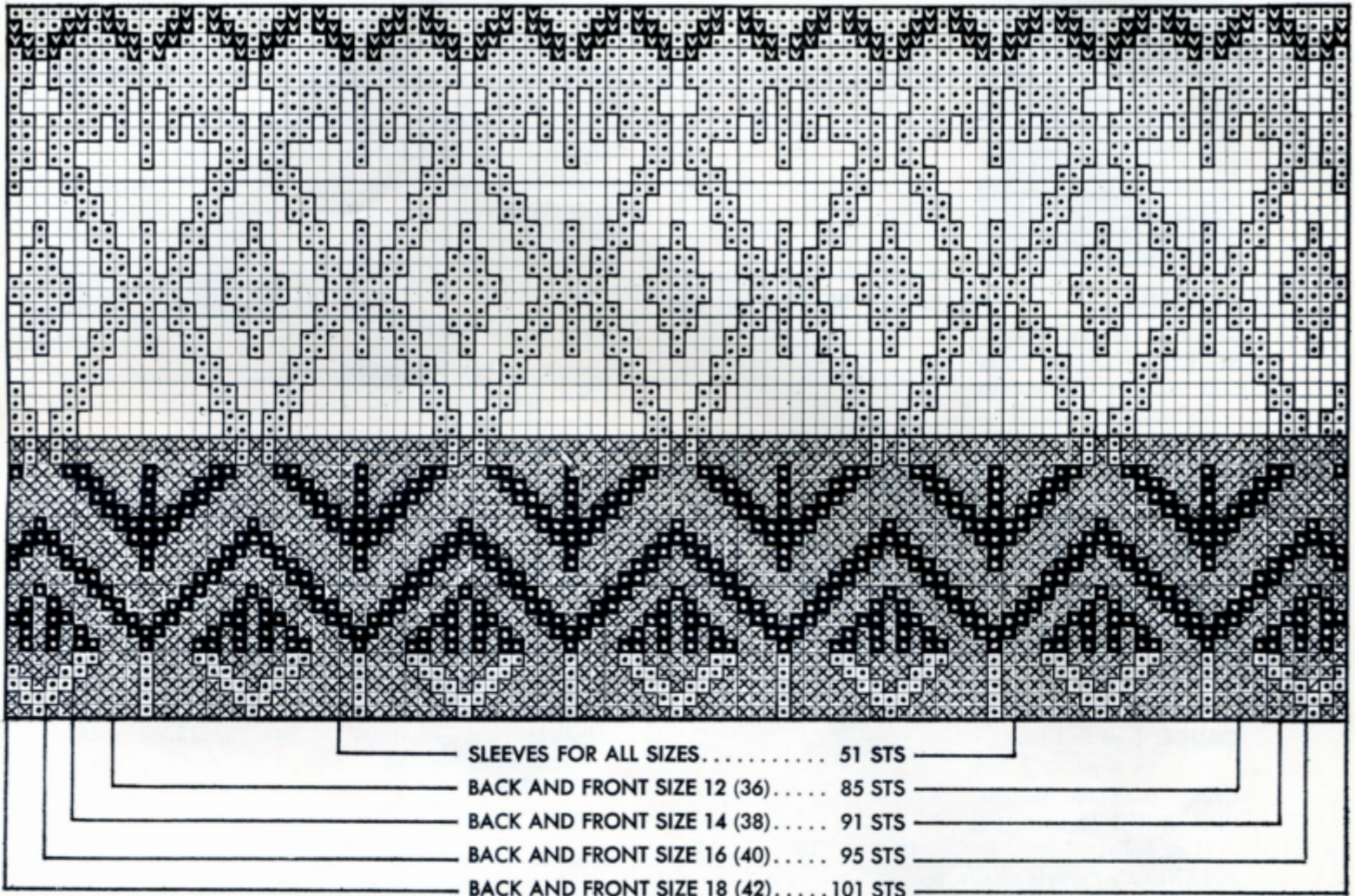
**SLEEVES:** With No. 7 needles for Men's sizes or No. 6 needles for Women's sizes and using Color A, cast on 43 sts. Rib in K 1, P 1 for 2½ inches, inc 10 sts evenly spaced across last row. There are 53 sts on needle. Change to No. 9 needles for Men's sizes or No. 8 needles for Women's sizes. Work in stockinette st following Chart on page 12 (according to number of sts designated), inc 1 st each side every 4th row 17(18-19) times, working inc sts in pat. Work even on 87(89-91) sts until 98 rows of pat have been completed, or work to desired length. Piece should measure about 20½ inches for Men's sizes or about 18½ inches for Women's sizes. Bind off.

**FINISHING:** Block each piece to measurements. Sew shoulder and neckband seams. Sew underarm seams, leaving about 9(9½-10) inches free on Back and Front for armholes on Men's sizes or about 8(8½-9) inches free for Women's sizes. Sew sleeve seams and sew in sleeves. Turn Neckband in half to wrong side and tack in place, being careful not to pull neck edge tightly. Steam seams.

## Her Style



New Outlook (Instructions on page 7)



**COLOR KEY**

- A OR BLUE
- ▣ B OR GREEN
- C OR WHITE
- ▤ D OR BLACK
- ▥ E OR GOLD
- ▦ E OR GOLD
- ▧ B OR GREEN